



**IESNA
SUSTAINING
MEMBER**



Test Report Number:	LCZP14070109
Applicant Name:	L-TECH CORPORATION
Applicant Address:	SHAOGANGTOU DISTRICT,QIAOTOU TOWN,DONGGUAN CITY.GUANGDONG PROVINCE,CHINA
Test item:	LED Downlight
Model / Type Reference:	LRKT400/403-9050
Date of Issue:	2014-08-18
Testing Laboratory:	LCTECH (Zhongshan) Testing Service Co.,Ltd 2/F.,Technology and Enterprise Development Center, Guangyuan Road, Xiaolan, Zhongshan, Guangdong, China
Test Specification:	Photometric test (According to IES LM-79-08)
Test Result:	See following pages
Compiled by:	Reviewed by:
2014-08-18 Lin Qiu	2014-08-18 Richard Li
_____	_____
Date Name Signature	Date Name Signature
Remark:	
N/A	
<p>The duplication of this report or parts of it and its use for advertising purposes is only allowed with permission of the testing laboratory. This report contains the result of the examination of the product sample submitted by the applicant. A general statement concerning the quality of the products from the series manufacture cannot be derived therefore.</p>	



DESCRIPTION INFORMATION (From Photometric File)

IESNA:LM-63-1995
[TEST] LCZP14070109
[TESTLAB] LCTECH
[DATE] 2014-8-15
[MANUFAC] L-TECH CORPORATION
[LUMCAT] LRKT400/403-9050
[LUMINAIRE] LED Downlight
[LAMPCAT] LED
[LAMP] LED
[OTHER] ELECTRICAL VALUES:120.05VAC 0.086A 10.23W 0.993

CHARACTERISTICS

Total Luminaire Lumens	725.55
Luminaire Efficacy	71
Total Luminaire Watts	10
CIE Type	Direct
Spacing Criteria (0-180)	1.18
Spacing Criteria (90-270)	1.18
Spacing Criteria (Diagonal)	1.26
Basic Luminous Shape	Circular
Luminous Length (0-180)	0.01 m (Diameter)
Luminous Width (90-270)	0.01 m (Diameter)
Luminous Height	0.00 m

LUMINANCE DATA (cd/sq.m)

Angle In Degrees	Average 0-Deg	Average 45-Deg	Average 90-Deg
45	6609190	6608455	6604047
55	4980714	4990676	5001091
65	3213046	3214275	3229026
75	1505306	1503299	1499284
85	1025161	1031121	1031121



CANDELA TABULATION



	<u>0</u>	<u>15</u>	<u>30</u>	<u>45</u>	<u>60</u>	<u>75</u>	<u>90</u>
0	344.17	344.17	344.17	344.17	344.17	344.17	344.17
5	342.32	342.08	341.82	342.29	341.76	342.11	342.24
10	336.13	336.15	335.97	335.58	335.77	335.87	335.58
15	325.56	325.59	325.58	325.41	325.39	325.67	325.20
20	311.09	311.34	310.93	310.91	310.80	310.70	310.90
25	292.50	291.76	292.28	291.77	291.81	291.66	291.59
30	269.21	269.19	269.06	268.94	268.87	268.98	268.83
35	242.43	243.03	242.46	242.37	242.78	242.84	242.59
40	212.93	212.97	212.87	212.79	212.43	212.44	212.15
45	179.93	180.06	179.51	179.91	180.12	179.75	179.79
50	144.30	144.27	144.64	144.39	144.26	144.70	144.52
55	109.99	110.11	109.94	110.21	110.45	110.26	110.44
60	78.51	78.76	78.61	78.93	79.37	79.81	78.99
65	52.28	51.86	52.13	52.30	52.42	52.70	52.54
70	30.49	30.35	30.40	30.38	30.71	30.66	30.45
75	15.00	15.02	15.02	14.98	15.05	15.05	14.94
80	7.80	7.76	7.79	7.76	7.72	7.76	7.79
85	3.44	3.49	3.50	3.46	3.47	3.44	3.46
90	0.52	0.51	0.47	0.46	0.40	0.39	0.33
95	0.36	0.36	0.36	0.38	0.36	0.37	0.40
100	0.36	0.37	0.37	0.37	0.38	0.38	0.38
105	0.41	0.40	0.39	0.39	0.40	0.41	0.40
110	0.38	0.42	0.42	0.42	0.45	0.40	0.40
115	0.43	0.42	0.45	0.40	0.42	0.41	0.43
120	0.43	0.46	0.44	0.44	0.46	0.44	0.41
125	0.48	0.49	0.48	0.45	0.49	0.48	0.48
130	0.53	0.52	0.48	0.51	0.51	0.52	0.52
135	0.48	0.50	0.49	0.50	0.49	0.49	0.48
140	0.55	0.55	0.53	0.54	0.52	0.56	0.57
145	0.65	0.65	0.68	0.64	0.66	0.66	0.65
150	0.82	0.82	0.82	0.80	0.82	0.81	0.81
155	0.98	1.00	1.00	0.99	1.00	1.00	1.00
160	1.27	1.26	1.24	1.25	1.27	1.25	1.29
165	1.51	1.50	1.50	1.51	1.50	1.49	1.51
170	1.70	1.69	1.69	1.68	1.68	1.68	1.68
175	1.79	1.79	1.77	1.79	1.78	1.75	1.77
180	1.84	1.84	1.84	1.84	1.84	1.84	1.84



ZONAL LUMEN SUMMARY

Zone	Lumens	%Lamp	%Fixt
0-30	258.35	35.6	35.6
0-40	409.67	56.5	56.5
0-60	646.99	89.2	89.2
0-90	722	99.5	99.5
90-120	1.27	.2	.2
90-130	1.69	.2	.2
90-150	2.51	.3	.3
90-180	3.55	.5	.5
0-180	725.55	100	100

Total Luminaire Efficiency = 100%

ZONAL LUMEN SUMMARY

Zone	Lumens
0-10	32.46
10-20	91.68
20-30	134.21
30-40	151.32
40-50	138.21
50-60	99.11
60-70	52.89
70-80	17.99
80-90	4.12
90-100	.42
100-110	.42
110-120	.42
120-130	.43
130-140	.39
140-150	.42
150-160	.47
160-170	.42
170-180	.17

Note: The luminaire was LED luminaire, the luminaire lumens was also considered as bare lamp lumens.

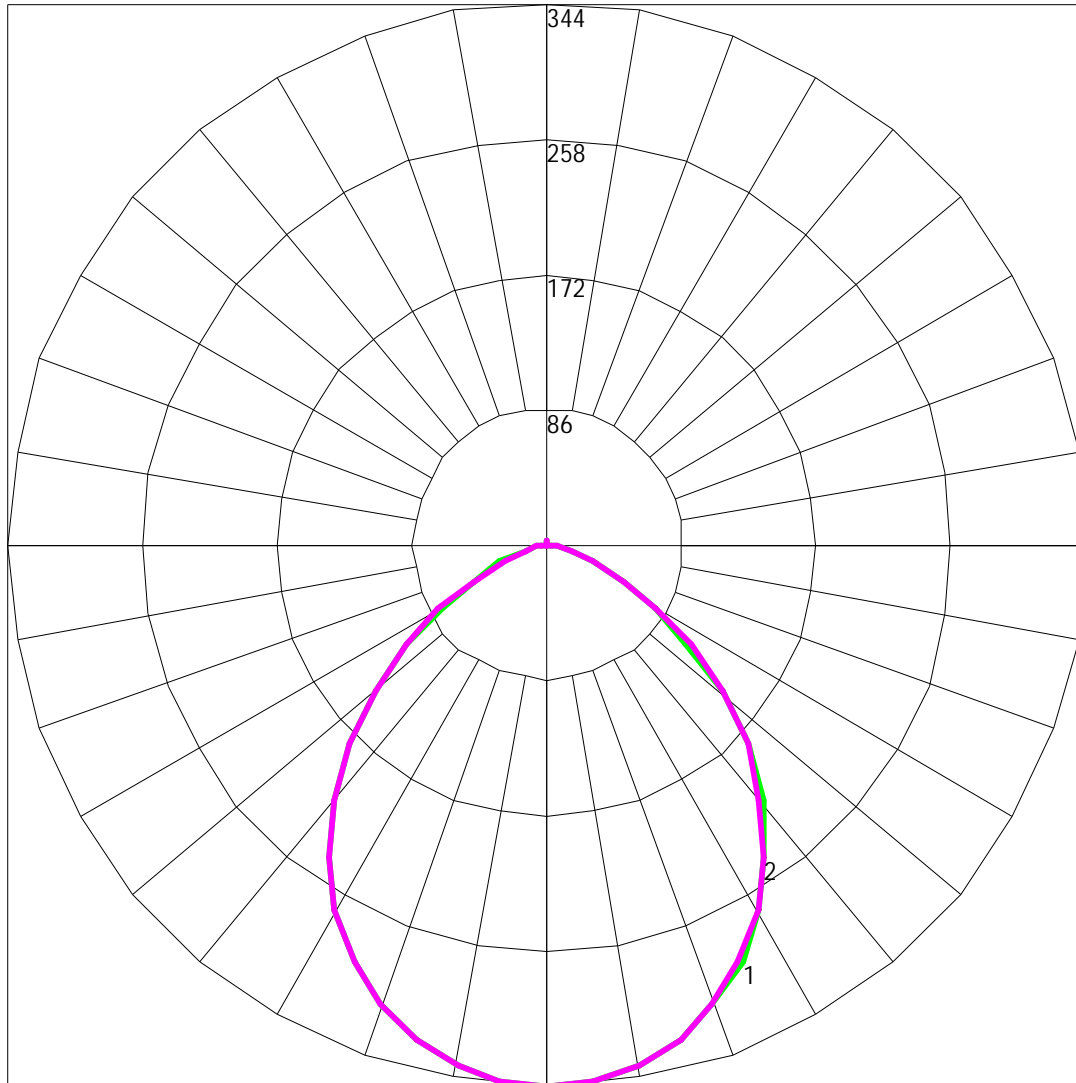


COEFFICIENTS OF UTILIZATION - ZONAL CAVITY METHOD

Effective Floor Cavity Reflectance 0.20

RC	80				70				50			30			10			0		
	RW	70	50	30	10	70	50	30	10	50	30	10	50	30	10	50	30	10	0	
0	119	119	119	119	119	116	116	116	116	111	111	111	111	106	106	106	102	102	102	100
1	111	107	103	100	100	108	104	101	98	100	97	95	96	94	92	93	91	89	87	
2	102	95	89	84	84	100	93	88	83	90	85	81	86	83	79	83	80	78	76	
3	94	85	78	72	72	92	83	77	71	80	75	70	78	73	69	75	71	68	66	
4	87	76	68	63	63	85	75	68	62	73	66	61	70	65	60	68	63	60	58	
5	80	69	61	55	55	78	68	60	55	66	59	54	64	58	53	62	57	53	51	
6	75	63	54	49	49	73	62	54	48	60	53	48	58	52	47	57	51	47	45	
7	70	57	49	43	43	68	56	49	43	55	48	43	53	47	43	52	46	42	40	
8	65	52	45	39	39	63	52	44	39	50	44	39	49	43	38	48	42	38	36	
9	61	48	41	35	35	59	48	40	35	47	40	35	46	39	35	45	39	35	33	
10	57	45	37	32	32	56	44	37	32	43	37	32	42	36	32	41	36	32	30	

Note: The luminaire was LED luminaire, the luminaire lumens was also considered as bare lamp lumens.

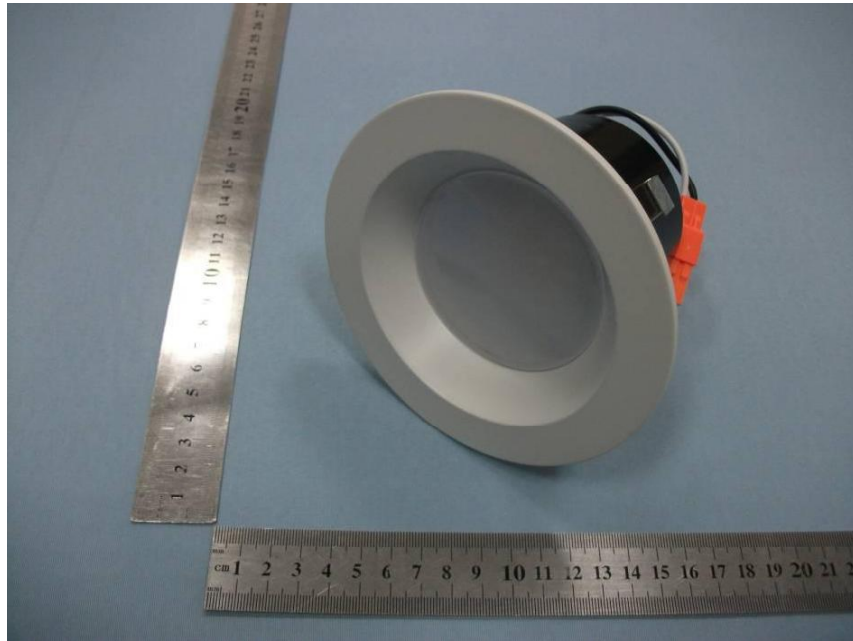


Maximum Candela = 344.17 Located At Horizontal Angle = 0, Vertical Angle = 0

1 - Vertical Plane Through Horizontal Angles (0 - 180)

2 - Vertical Plane Through Horizontal Angles (90 - 270)

Photo of sample



Picture 1 Front View



Picture 2 Back View

--End of test report--